

IMMINGHAM EASTERN RO-RO TERMINAL



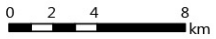
Environmental Statement: Volume 2
Figures: Chapter 4: Need and Alternatives
Document Reference: 8.3.4

APFP Regulations 2009 – Regulation 5(2)(a) and 5(2)(e)
PINS Reference – TR030007

December 2022

Figures

- 8.3.4(a) Figure 4.1 HGV driving times from Immingham
- 8.3.4(b) Figure 4.2 Water depths of 7 m below Chart Datum
- 8.3.4(c) Figure 4.3 Port of Grimsby land use
- 8.3.4(d) Figure 4.4 Port of Hull land use
- 8.3.4(e) Figure 4.5 Killingholme to Immingham land use
- 8.3.4(f) Figure 4.6 Killingholme land use
- 8.3.4(g) Figure 4.7 Port of Immingham land use



Legend

- 2 hours driving time
- 3 hours driving time
- 4 hours driving time
- Motorway
- Primary dualled A road
(Primary single carriageway A roads not shown)

© ABPmer, All rights reserved, 2022. Contains OS data © Crown Copyright and database right 2022.

Date	By	QA
08/08/2022	MS	PR
Projection	British National Grid	
Scale (A4)	See Scale Bar	
Project no.	17/G/66-8	



Fig4.1_17G66-8_HGV_Driving_Times_A4

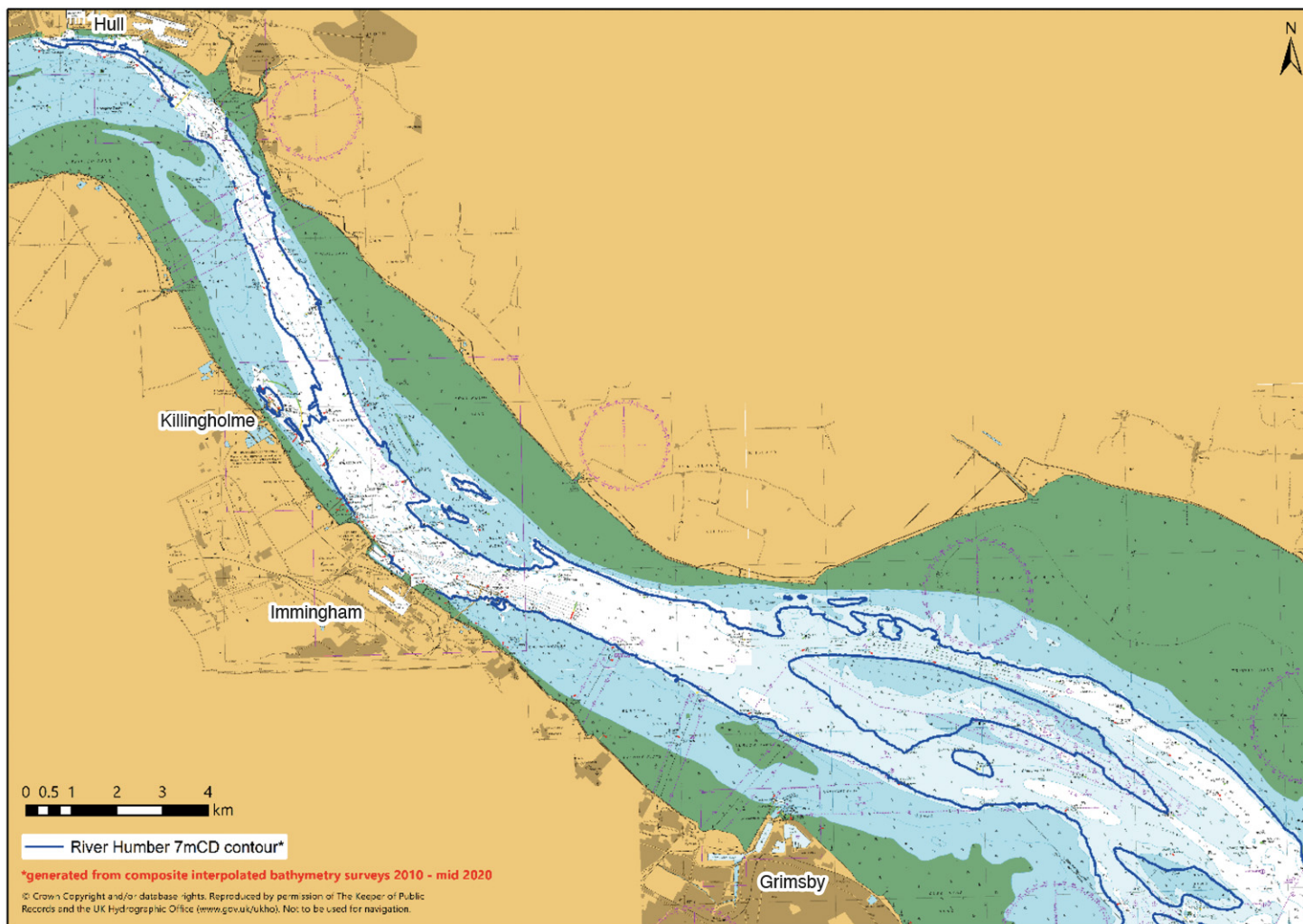


**IMMINGHAM EASTERN
RO-RO TERMINAL
HGV DRIVING TIMES
FROM IMMINGHAM**

Figure 4.1

Legend

— River Humber 7mCD contour
(Generated from composite interpolated bathymetry surveys 2010 - mid 2020)



© ABPmer, All rights reserved, 2022. © Crown Copyright and/or database rights. Reproduced by permission of The Keeper of Public Records and the UK Hydrographic Office (www.gov.uk/ukho). Not to be used for navigation.

Date	By	QA
08/08/2022	MS	PR
Projection	British National Grid	
Scale (A4)	1:150,000	
Project no.	17/G/66-8	

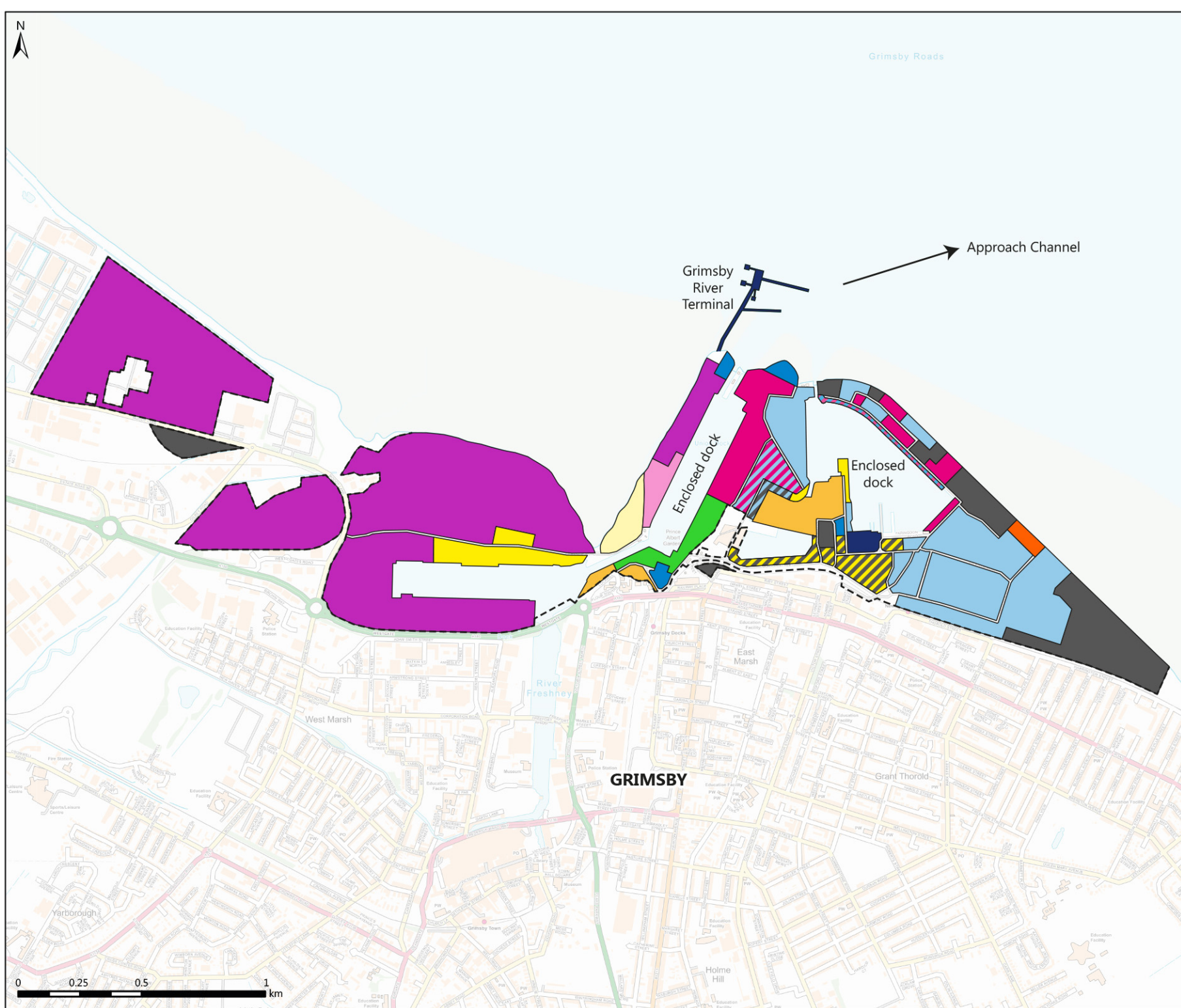


Fig4.2_17G66-8_Admiralty_Chart_Location_A4



**IMMINGHAM EASTERN
RO-RO TERMINAL
WATER DEPTHS OF 7M
BELOW CHART DATUM**

Figure 4.2



- Legend**
- Indicative port area
 - Automotive storage
 - Fish / Food
 - Offshore energy
 - General storage
 - Development land
 - Dry Bulks
 - Forest Products
 - Port Admin/Engineering
 - Break Bulks
 - Port Infrastructure
 - Marina / Leisure
 - Waste

© ABPmer, All rights reserved, 2022. Contains OS data © Crown Copyright and database right 2022.

Date	By	QA
08/08/2022	MS	PR
Projection	British National Grid	
Scale (A4)	1:20,000	
Project no.	17/G/66-8	

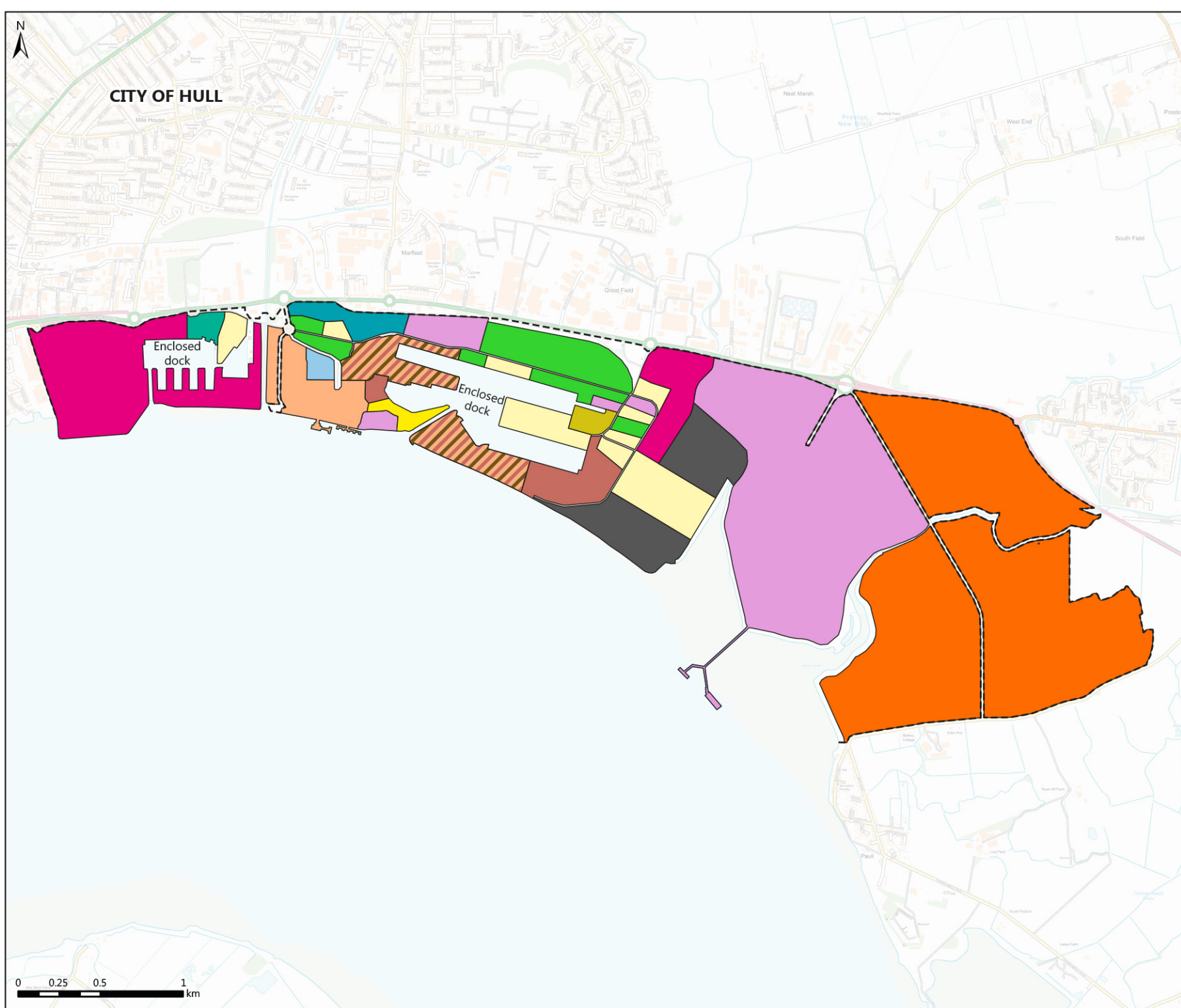


Fig4.3_17G66-8_Port_of_Grimsby_Land_Use_A4



**IMMINGHAM EASTERN
RO-RO TERMINAL
PORT OF GRIMSBY LAND USE**

Figure 4.3



- Legend**
- Indicative port area
 - Fish / Food
 - Offshore energy
 - General storage
 - Development land
 - Liquid Bulks
 - Dry Bulks
 - Humber International Enterprise Park Development
 - Forest Products
 - Steel
 - RoRo cargo
 - Commercial
 - Break Bulks
 - Lo-Lo
 - Ship Repair

© ABPmer, All rights reserved, 2022. Contains OS data © Crown Copyright and database right 2022.

Date	By	QA
08/08/2022	MS	PR
Projection	British National Grid	
Scale (A4)	1:30,000	
Project no.	17/G/66-8	

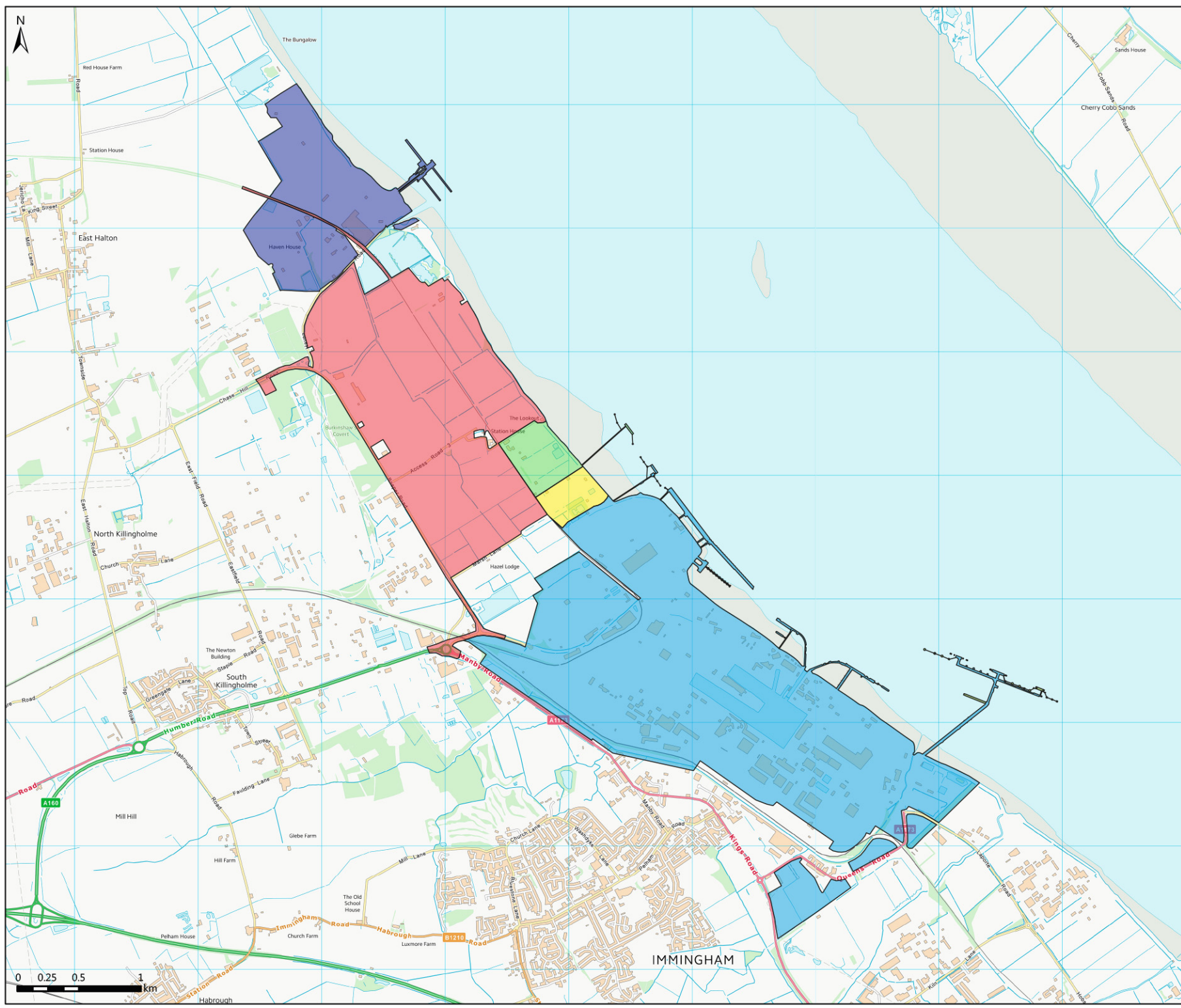


Fig4.4_17G66-8_Port_of_Hull_Land_Use_A4



**IMMINGHAM EASTERN
RO-RO TERMINAL
PORT OF HULL LAND USE**

Figure 4.4



- Legend**
- CLdN Ports Killingholme Facility
 - Able Marine Energy Park Site
 - Exolium Fuel Import Facility
 - Immingham Gas Terminal
 - Port of Immingham

© ABPmer, All rights reserved, 2022. Contains OS data © Crown Copyright and database right 2022.

Date	By	QA
09/08/2022	MS	PR
Projection	British National Grid	
Scale (A4)	1:40,000	
Project no.	17/G/66-8	

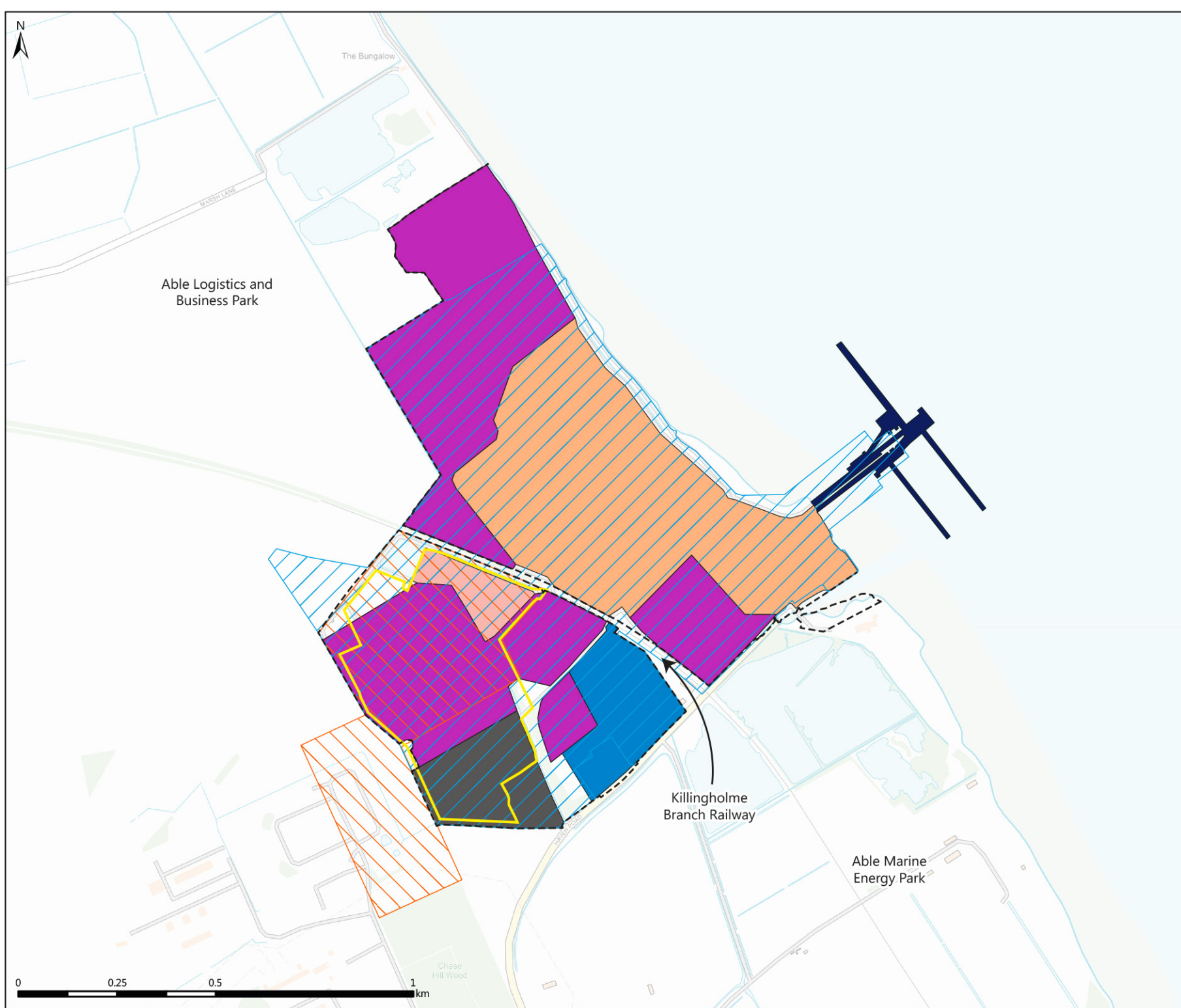


Fig4.5_17G66-8_Killingholme_to_Immingham_A4



**IMMINGHAM EASTERN
RO-RO TERMINAL
KILLINGHOLME TO IMMINGHAM
LAND USE**

Figure 4.5



- Legend**
- Indicative port area
 - Automotive storage
 - Development land
 - Border Control
 - RoRo cargo
 - Port Admin/Engineering
 - Port Infrastructure
 - Planning Permission PA/2020/1483
 - Relevant North Killingholme Power DCO Order Limits
 - Main area of North Killingholme Power DCO Works

© ABPmer, All rights reserved, 2022. Contains OS data © Crown Copyright and database right 2022.

Date	By	QA
09/08/2022	MS	PR
Projection	British National Grid	
Scale (A4)	1:12,500	
Project no.	17/G/66-8	

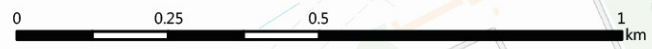


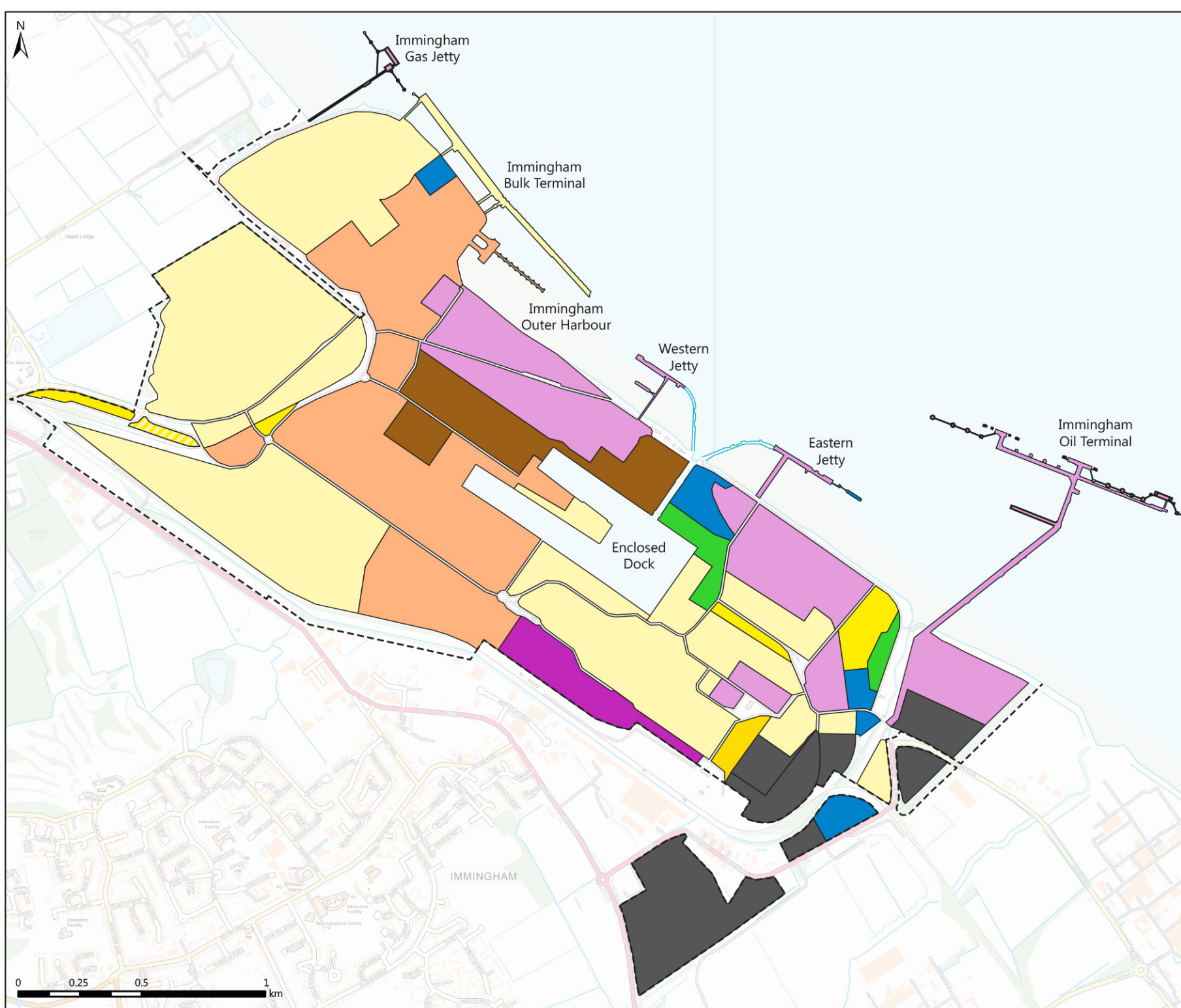
Fig4.6_17G66-8_Killingholme_Land_Use_A4



**IMMINGHAM EASTERN
RO-RO TERMINAL
KILLINGHOLME LAND USE**

Figure 4.6





- Legend**
- Indicative port area
 - Automotive storage
 - General storage
 - Development land
 - Liquid Bulks
 - Other Bulks
 - Forest Products
 - Ro-Ro
 - Containers
 - Port Admin/Engineering

© ABPmer, All rights reserved, 2022. Contains OS data © Crown Copyright and database right 2022.

Date	By	QA
08/08/2022	MS	PR
Projection	British National Grid	
Scale (A4)	1:20,000	
Project no.	17/G/66-8	



Fig4.7_17G66-8_Port_of_Immingham_Land_Use_A4



**IMMINGHAM EASTERN
RO-RO TERMINAL
PORT OF IMMINGHAM LAND USE**

Figure 4.7

